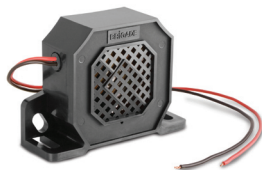


CONSTANT TONE ALARM



CT-470 - Medium duty - 102 decibels

1292

- **12-24 Volts**
- **IP68**
- **Size (WxHxD)**
100 x 72 x 32mm
- **2 year warranty**

Features

- Constant tone ideal as forward horn or other warning
- Frequency (KHz): 1.4
- Sounder unit: Speaker
- Hole centres (mm): 76-82

Power

- Current: Max 0.3 Amps

Durability & standards

- Mechanical vibration: 10G
- Operating temperature: -40 to +85°C
- CE marked
- EMC approved: e
- SAE J994

